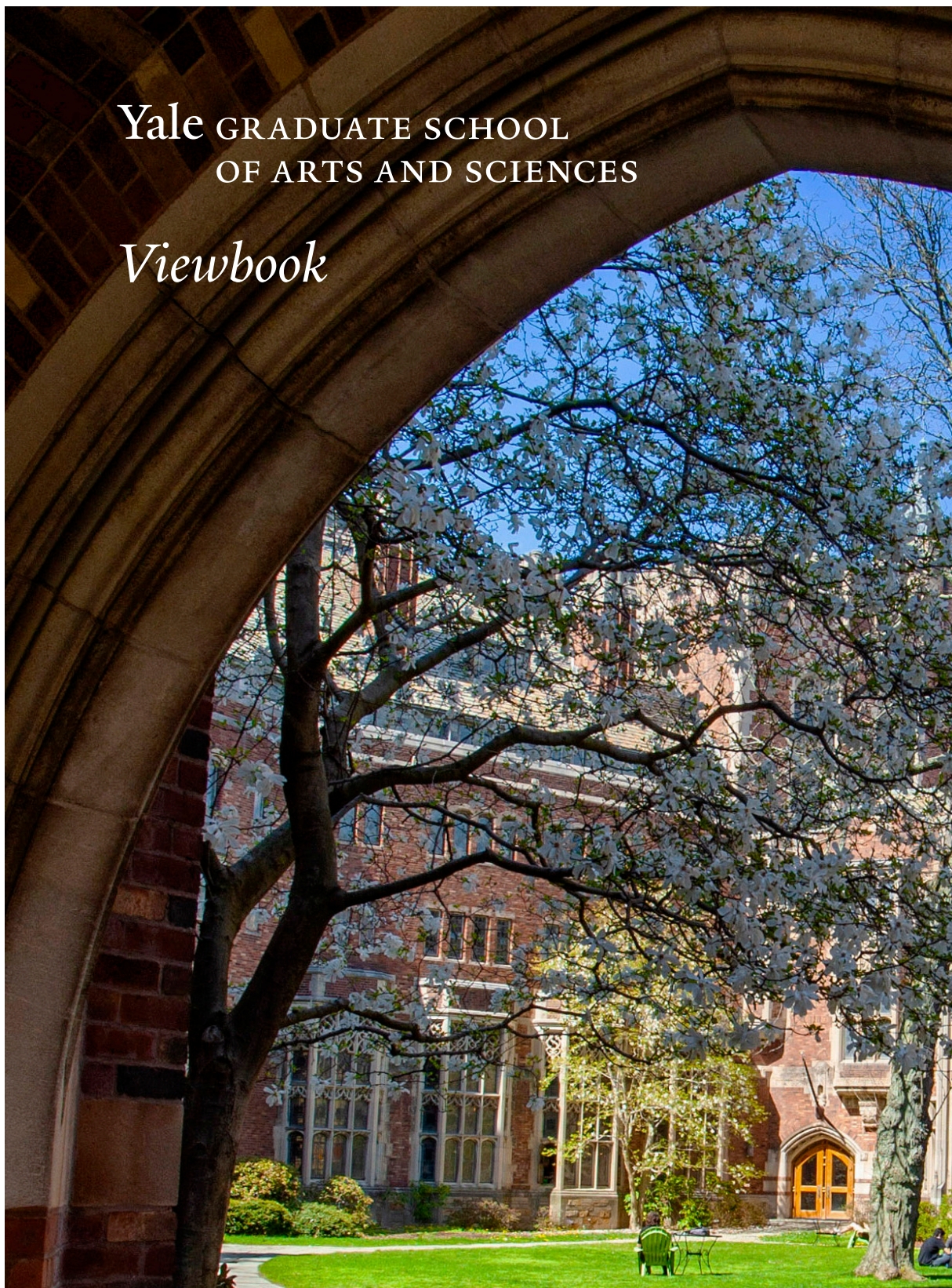


Yale GRADUATE SCHOOL  
OF ARTS AND SCIENCES

*Viewbook*



Yale GRADUATE SCHOOL  
OF ARTS AND SCIENCES

*Viewbook*





“Yale is at once a tradition,  
a company of scholars,  
a society of friends.”

*(Yale: A Short History, by George W. Pierson)*



## Yale University

Bringing together researchers from across the nation and around the globe, Yale is a leader in cutting-edge research. Its many departments, programs, and centers approach today's urgent questions in innovative, integrated ways. From the new Wu Tsai Institute devoted to questions of human cognition to the Planetary Solutions Project, which grapples with current challenges in biodiversity and climate, Yale continues to advance the boundaries of what we know and how we know it. And graduate education is central to this collaborative endeavor.

Yale University provides a home to over 7,000 master's- and PhD-degree students from all 50 states and from 120 countries around the world.



**Brianna Jackson**  
PhD Candidate, Nursing  
Hometown:  
Whitby, Ontario, Canada

*"Surrounded by brilliant minds, global leaders, and unparalleled resources, Yale's reputation for excellence was a key consideration when applying to doctoral programs."*

## Yale and the World

Since its founding in 1701, Yale has been dedicated to expanding and sharing knowledge, inspiring innovation, and preserving cultural and scientific information for future generations.

Yale's reach is both local and international. The University partners with its hometown of New Haven, Connecticut to strengthen the city's community and economy and engages with people and institutions across the globe in the quest to promote cultural understanding, improve the human condition, delve deeper into the secrets of the universe, and train the next generation of world leaders.

### YALE BY THE NUMBERS 2021-22

**6,536**

UNDERGRADUATE STUDENTS

**8,031**

GRADUATE & PROFESSIONAL STUDENTS

**2,789**

INTERNATIONAL SCHOLARS

**21.6%**

PERCENTAGE OF INTERNATIONAL STUDENTS

**3,454**

STUDENTS RECEIVING SCHOLARSHIPS/GRANTS (YALE SOURCES)

**120**

COUNTRIES REPRESENTED BY INTERNATIONAL STUDENTS

**5,123**

FACULTY MEMBERS

**10,500**

STAFF MEMBERS



A photograph of a historic stone building, likely a part of Yale University. The building is constructed from light-colored, textured stone blocks. It features several windows with dark frames and a prominent entrance with a small sign that reads "WALKER HOUSE". The building is partially obscured by lush green foliage in the foreground. A dark blue banner is overlaid at the top of the image, containing the text "Yale GRADUATE SCHOOL OF ARTS AND SCIENCES".

# Yale GRADUATE SCHOOL OF ARTS AND SCIENCES

## Mission Statement

The Graduate School of Arts and Sciences educates graduate students to seek answers to life's most challenging questions by leading in the advancement, application and preservation of knowledge. We carry out this mission by investing in and drawing upon the strengths of a collaborative, diverse and inclusive community of scholars and researchers.





**THE GRADUATE SCHOOL  
BY THE NUMBERS**

**3,300+**

GRADUATE  
STUDENTS

**~3,000**

PHD STUDENTS

**140+**

VISITING  
SCHOLARS

**~400**

MASTERS  
STUDENTS

**~1,400**

INTERNATIONAL  
STUDENTS

**~420**

UNDERREPRESENTED  
STUDENTS

**1,200+**

GSAS FACULTY

**30+**

GSAS STAFF

**1,100+**

DISTINGUISHED SCHOLARS AND RESEARCHERS  
who teach, advise, and mentor graduate students

**~50**

DOCTORAL  
PROGRAMS

**3**

RESEARCH  
CAMPUSES

**~20**

MASTER'S DEGREE  
PROGRAMS

**370+**

LABS

**20+**

EXCHANGE PROGRAMS  
with partner institutions around the world



*"Seeking the answers to life's most challenging questions requires a mixture of collaboration and creativity. The welcoming nature of the community to different backgrounds and perspectives, coupled with the innovative and synergetic mindset of each individual, is why I chose Yale."*

**Juan Serviano**  
PhD Candidate, Chemistry  
Hometown:  
Springfield, Pennsylvania

**STATE-OF-THE-ART FACILITIES**

**EXPANSIVE OPPORTUNITIES TO COLLABORATE** with students and scholars across campus in student organizations, research centers, and institutes

**DOZENS OF INTERDISCIPLINARY** natural science, social science, and humanities **RESEARCH CENTERS**





**GRADUATE SCHOOL ENROLLMENT  
2021-2022**

**MATRICULATING CLASS  
2021-2022**

Doctoral Students

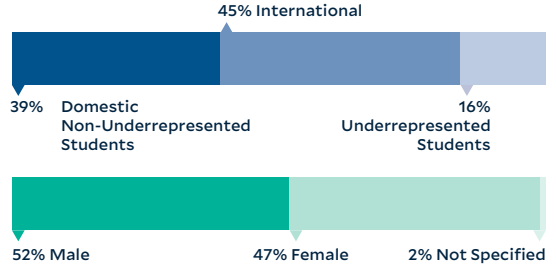
**11,344**

DOCTORAL APPLICATIONS

**522**

MATRICULANTS

522 Doctoral Students



Master's Students

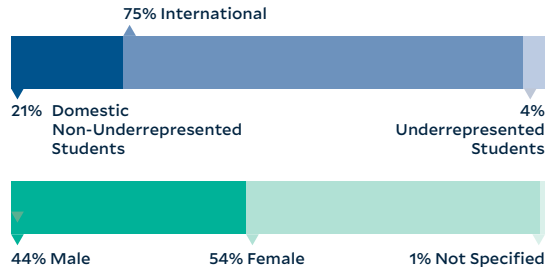
**3,520**

MASTER'S APPLICATIONS

**304**

MATRICULANTS

304 Master's Students



**FUNDING 2022-2023****\$117 MILLION**ESTIMATED ANNUAL GRADUATE SCHOOL  
FINANCIAL AID BUDGET**\$36,300–  
\$39,200**DOCTORAL STUDENT STIPENDS FOR 5 YEARS  
(+ELIGIBILITY FOR 6TH-YEAR FUNDING)**\$6,600**

FAMILY SUBSIDY STIPEND

**\$500,000**FUNDING PER DOCTORAL STUDENT  
OVER THE COURSE OF ENROLLMENT**\$46,900**TUITION COST COVERED FOR  
DOCTORAL STUDENTS**NO COST**COMPREHENSIVE HEALTH INSURANCE  
FOR DOCTORAL STUDENTS**ADDITIONAL FUNDING**

## Supplementary Funds

THROUGH TRAVEL GRANTS, CONFERENCE  
FUNDING, OTHER INTERNAL AND EXTERNAL  
FELLOWSHIPS

## Emergency Funding

AVAILABLE TO STUDENTS IN NEED

**EMERGING SCHOLARS INITIATIVES**Dean's Emerging Scholars  
Fellowship (DESF)**\$3,500**STIPEND INCREASE FOR 3 YEARS  
AND A ONE-TIME**\$2,000**RESEARCH AWARD  
FOR INCOMING STUDENTS ONLYDean's Emerging Scholars  
Research Award (DESRA)**\$2,000**

FOR CURRENT STUDENTS

## Relocation Award

AVAILABLE TO INCOMING STUDENTS  
WITH FINANCIAL NEED





# Learning at Yale

## A Commitment to Supporting Students as They Learn

Since 2001, the Graduate School has made a commitment to fully fund doctoral programs, offering admitted PhD students full-tuition fellowships, competitive stipends, excellent healthcare coverage, and an increasing range of student services, including parental relief, to assist them in their academic and personal lives and careers.

For more information about the range of resources available to assist students in their intellectual journey, please see “Living at Yale.”

## Academic Programs ↗

With more than seventy master’s and PhD programs, many of which are interdisciplinary, Yale offers an abundance of opportunities for students to pursue their intellectual interests and engage in conversations with world-renowned scholars and researchers from around the globe. Yale’s many centers, institutes, and collections allow students to undertake cutting-edge research projects that push the boundaries of knowledge. A higher percentage of Yale’s faculty have joint appointments than at peer institutions, inspiring robust conversations across disciplines and schools. Whatever topic students wish to explore, Yale has world-class faculty and facilities to guide and enable their research.



*Dr. Iwasaki has been at the forefront of the COVID-19 pandemic research, science communication, and public service. Dr. Iwasaki is also well known for her advocacy for women and underrepresented minorities in science and medicine.*

**Akiko Iwasaki**  
Waldemar Von Zedtwitz  
Professor of Immunobiology,  
of Molecular, Cellular and  
Developmental Biology;  
and Professor of Dermatol-  
ogy, and of Epidemiology, Yale  
School of Medicine; Principal  
Investigator, Howard  
Hughes Medical Institute  
  
PhD in Immunobiology,  
University of Toronto  
  
Hometown: Iga, Japan

## Interdisciplinary Research

Yale is known for its ability to bring scholars together from diverse fields to produce cutting-edge research and advance knowledge. The Graduate School encourages students and faculty to work across fields of inquiry and think in innovative ways about existing and new areas of study, through its numerous combined and joint degrees, graduate certificates, and centers.

### COMBINED AND JOINT DEGREES

Yale has a long history of and commitment to interdisciplinary research and has pioneered the creation of interdisciplinary programs, such as African American Studies, American Studies, Film and Media Studies, and Medieval and Renaissance Studies. Students in these fields are able to pursue a combined PhD with departments in related fields. Other combined-degree programs are offered in fields as varied as Anthropology and Environment, History of Art and English, and Political Science and Statistics & Data Science. In addition to these established academic programs, students can also seek approval for *ad hoc* interdisciplinary programs.

The curriculum of Yale's Biological and Biomedical Sciences (BBS) program was created to encourage students to explore across programs. BBS students have access to courses, seminars, and faculty labs in every department; they enter into tracks and only choose their department after a year of study and exploration.

The Graduate School also participates in formal joint-degree programs with Yale's professional schools, including Environment, Law, Management, and Medicine.



#### Crystal N. Feimster

Associate Professor in the Departments of African American Studies and History and the Programs of American Studies and Women, Gender, and Sexuality Studies

PhD in History,  
Princeton University

Hometown:  
Statesville, North Carolina

*"My priority is to introduce students not only to the historical past, but also to the unspoken rules of knowledge production. Using American Studies as a model, I encourage students to commit themselves to at least two sets of methodological tools: to use historical analysis as a means to decipher American culture, broadly defined, and to use literary analysis to analyze the language, narrative form, producers of and audience for, any kind of historical evidence."*







**Anjelica Gonzalez**  
Associate Professor of  
Biomedical Engineering  
Faculty Director of Tsai  
Center for Innovative  
Thinking at Yale University

PhD in Computational  
Biology, Baylor College  
of Medicine

Hometown:  
Las Vegas, Nevada

*Anjelica Gonzalez is committed to training the next generation of scientists to think in an interdisciplinary way and approach problems from a global perspective. The Gonzalez Lab combines organic chemistry, molecular biology, mathematics, computational modeling, and image analysis to develop and use engineered scaffolds to dissect the chemomechanics of immunological processes.*

## GRADUATE CERTIFICATES ↗

Yale is an institution where interdisciplinary research and studies thrive. In addition to numerous combined- and joint-degree granting programs, Yale offers the following certificates: [Archaia](#) (focusing on ancient and premodern cultures and societies), [Environmental Humanities](#), [Film and Media Studies](#), [Integrated Graduate Program in Physical and Engineering Biology \(PEB\)](#), [Leadership and Research Management for Physician Scientists](#), [MacMillan Center for International and Area Studies](#), [Public Humanities](#), [Translation Studies](#), and [Women's, Gender, and Sexuality Studies](#). Such certificates enable PhD students to develop expertise in adjacent intellectual areas without extending their time to degree.

*Yale is internationally known for research centers, laboratories, and institutes engaged in pushing the boundaries of knowledge in areas ranging from autism to globalization to climate change.*



**Yarow Dunham**  
Associate Professor  
of Psychology

EdM in Mind, Brain, and  
Education, Harvard  
Graduate School of  
Education

Edd in Human Development  
and Psychology, Harvard  
Graduate School of  
Education

Hometown:  
Berkeley, California

*"The most rewarding aspects of my professional life so far have been seeing mentoring relationships shift into genuine collaborations in which I'm learning as much or more than I'm teaching. My goal in advising, then, is to set the stage for growth and independence by supporting student interests and encouraging forays into regions that neither of us have yet mastered, with the hope that something new and exciting will emerge."*

## INTERDISCIPLINARY CENTERS AND INSTITUTES ↗

More than 100 academic centers, enable researchers from across intellectual fields to gather together, share their expertise, and advance knowledge unfettered by traditional disciplinary boundaries. The MacMillan Center is a hub for international and area studies. The Center for the study of Race, Indigeneity, and Transnational Migration (RITM) fosters intellectual exchanges that cross institutional, disciplinary, and geographic borders; enrich and challenge academic fields; and foreground underrepresented perspectives. The Yale Quantum Institute facilitates the research and teaching of quantum science at Yale and hosts leading scientists from around the world. The Yale Planetary Solutions Project cultivates collaborations across disciplines to address complex environmental challenges. At the Institution for Social and Policy Studies, social scientists discuss key public policy issues to advance research, shape policy, and educate the next generation



of policy thinkers and leaders. Yale's [School of Engineering](#), nearby Science Hill, the [School of Medicine](#), and [West Campus](#) boast well over a million square feet of state-of-the-art lab space for interdisciplinary research in engineering and the physical and biological sciences. These are just a few of the many intellectual hubs that draw researchers from around the globe to produce breakthroughs in knowledge.

### MUSEUMS, GALLERIES, AND COLLECTIONS ↗

Yale is home to world-class museums and galleries that display, study, and preserve cultural and scientific treasures. First-hand access to Yale's collections forms an integral part of teaching and learning across the university. Treasures such as the Gutenberg Bible, historic musical instruments, fossils of the earliest dinosaurs that walked the earth, works by leading innovators in art, architecture, moving image, and design — offer abundant opportunities for graduate students to study the objects of our physical, cultural, and scientific inheritance. Many of the collections offer courses or workshops in archival research and other specialty areas, enabling students to interact directly with art, artifacts, and archives.



*“Yale offers an abundance of resources for the study of visual and material culture. Not only do we gain unique access to the Yale University Art Gallery and the Yale Center for British Art— which house unparalleled art collections—but also to libraries such as the Beinecke and the Medical Library.”*

**Nathalie Miraval**  
PhD Candidate,  
History of Art

Hometown:  
Aurora, Colorado

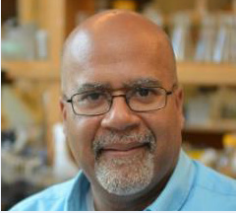




### YALE LIBRARIES [➤](#)

The unique collections and knowledgeable specialists of the Yale University Library system help students learn and develop into experts in their chosen fields of study. Yale's 14 libraries also offer a variety of workshops to familiarize scholars with their collections and services, in addition to training in Geographic Information Systems (GIS), research data management, a StatLab to support statistics and data analysis, and a Digital Humanities Lab.

*Yale's libraries contain 15,000,000+ volumes and information in all media, ranging from ancient papyri to early printed books to electronic databases*



### Paul Turner

Rachel Carson Professor of Ecology and Evolutionary Biology and Microbiology  
Faculty member, Yale School of Medicine

PhD in Evolutionary Biology,  
Michigan State University

Hometown:  
Syracuse, New York

*“I try to emphasize the development of critical thinking, particularly in graduate student education. My philosophy in leading graduate student projects is to help foster independence of thought and creativity, so that students are poised to succeed.”*



## Academic Fellowships ↗

Since 2001, every PhD student is awarded a tuition fellowship, as well as a monthly stipend, to support them while they are engaged in full-time study. In addition, Yale offers a number of supplemental awards to admitted applicants who have demonstrated particular promise as researchers and scholars.

Some fellowships also provide a second intellectual home for recipients, in addition to their degree-granting program. The RITM Fellowship offers its recipients a community to discuss issues of race, indigeneity, and transnational migration beyond their home department, in addition to \$1,000 for research. Whitney Humanities Center Environmental Humanities Fellows also receive \$1,000 for research and join the robust community of faculty and students engaged in research that straddles the humanities and environmental issues.

*“I am grateful that my teaching connects me with a generation of emerging scholars formed by the experiences of migration and struggle that are the subject of my work. They are transforming my field just as they are expanding the horizons of our institution.”*



### Alicia Schmidt Camacho

Professor of Ethnicity, Race, and Migration

PhD in Modern Thought and Literature, Stanford University

Hometown:  
Philadelphia, Pennsylvania





## Advising at Yale ↗

Yale is one of the best places in the world to make the transformation from being a student consuming knowledge to becoming an independent researcher *producing* new knowledge. Along the way, students weave together a network of resources and advisers in pursuit of their intellectual and professional goals. These advisers include individual faculty members, one or two of whom usually serve as a “primary adviser;” the Director of Graduate Studies (**DGS**), **the faculty member who serves as a resource to all graduate students in a program**; dissertation committee members, and the program’s Placement Officer (or career adviser). The academic **deans and staff** of the Graduate School also stand ready to offer help, advice, and guidance. McDougal Center Fellows, Fellows in the Office for Graduate Student Development and Diversity, and advanced graduate students in the same or related programs serve as peer mentors available to discuss various questions and concerns as they arise. Self-direction, intrinsic motivation, and perseverance— together with a community ready to engage with researchers at every stage of their career—enable students to find supportive advisers, mentors, and friends.

Each year, the Graduate School recognizes the excellence of graduate mentors across the divisions, some of whom are profiled in this document.



### Ned Blackhawk

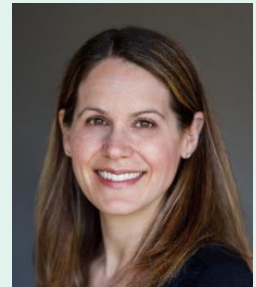
Randolph W. Townsend, Jr.  
Professor of History and  
American Studies

MA in History, UCLA  
PhD in History,  
University of Washington

Hometown:  
Detroit, Michigan

*“It’s extremely rewarding to assist students in developing their passions, helping them see how their work answers important questions, and guiding their work through formative stages. I take particular pride in working with students from underrepresented minority backgrounds and helping to diversify the academy.”*

*“Being an effective mentor and advisor to my students has meant listening to them and using intuition to figure out what is going to help them thrive. Having the opportunity to champion my students, to enable their best work, and to relish the ways in which their ideas and vision go beyond mine is one of the best parts of being a professor.”*



### Maureen Long

Bruce D. Alexander ’65  
Professor and Chair of Earth  
and Planetary Sciences

PhD in Geophysics, MIT

Hometown:  
Chelmsford, Massachusetts



### Andrew Arakaki

PhD Candidate, Chronic  
Disease Epidemiology

Hometown: Irvine, California

*“The faculty treat graduate students like colleagues and are eager to collaborate and provide opportunities for you to grow as a researcher.”*



## Exchange Programs

The Graduate School offers domestic and international exchange opportunities for doctoral students. Through these reciprocal programs, graduate students can master course content in another language, learn new methodologies to inform their dissertations, visit library archives and collections to expand their research, and exchange ideas with fellow scholars from around the world.

### IVYPLUS EXCHANGE SCHOLAR PROGRAM ↗

The IvyPlus Exchange Scholar Program enables our doctoral students to study and conduct research at one of ten participating IvyPlus institutions (the University of California at Berkeley, Brown, the University of Chicago, Columbia, Cornell, Harvard, the Massachusetts Institute of Technology, the University of Pennsylvania, Princeton, and Stanford) for a term or an academic year at no additional tuition cost. Doctoral students who have completed their first year of coursework are eligible to participate.

### INTERNATIONAL EXCHANGE SCHOLAR PROGRAM ↗

The Graduate School has established formal exchanges with 20+ international institutions with reciprocal academic benefits for faculty and graduate students. Most exchanges last one term, an academic year or a summer.



**Doyle Calhoun**  
PhD Candidate, French

Hometown:  
Duxbury, Massachusetts

*“I chose Yale for the rigor and diversity of its graduate programming in the humanities, the cosmopolitanism of its intellectual community, and its commitment to funding international humanistic research.”*

## Language Study

### ENGLISH LANGUAGE PROGRAM ↗

The English Language Program (ELP) provides language and communication support for graduate and professional students and faculty through courses, workshops, and individual instruction, as well as an intensive Summer Program for entering doctoral students. ELP serves multilingual students at every stage of their academic careers, from orientation through dissertation and job search. ELP faculty help students in academic communication, especially writing, vocabulary development, presentation skills, and pronunciation.

### CENTER FOR LANGUAGE STUDY ↗

The Center for Language Study (CLS) supports language teaching and learning across the University, including support for nonnative speakers of English through its [English Language Program](#). The certificate in Second Language Acquisition (SLA) offers graduate students grounding in the theory and practice of language education. The SLA Certificate helps prepare students for the job market; the teaching ePortfolio graduate students produce in the program is attractive to hiring committees.



## Teaching at Yale

### TEACHING SUPPORT AND DEVELOPMENT ↗

Learning to teach and to evaluate student work is fundamental to the academic training and professional development of graduate students. Teaching requirements vary by program and discipline, but most PhD candidates will teach one to four courses. The Teaching Fellow Program is the principal framework at Yale in which graduate students learn to become effective teachers. The program provides opportunities for graduate students to develop teaching skills, under faculty guidance, through active participation in the teaching of Yale undergraduates.

At Yale, students can count on support and guidance from the professor in whose course they assist, as well as from others in their department or program. In addition, the Poorvu Center for Teaching and Learning helps students strengthen their skills as instructors.

### POORVU CENTER



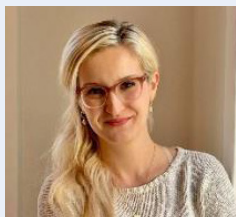
*“The graduate students I have taught and learned from at Yale are fiercely curious, generous thinkers; so my teaching philosophy is to engage their curiosities and capabilities and to do my best to cultivate them.”*

#### Joseph Fischel

Associate Professor of Women's, Gender, & Sexuality Studies

PhD in Political Science, University of Chicago  
MSL, Yale Law School

Hometown:  
Scarsdale, New York



#### Masha Shpolberg

Assistant Professor of Film Studies, University of North Carolina, Wilmington

MA in Cinema Studies, Sorbonne Nouvelle  
PhD in Comparative Literature and Film & Media Studies, Yale University

Hometown:  
Boston, Massachusetts

*“One of my most meaningful experiences at Yale was working for two years as a McDougal Graduate Teaching Fellow at the Poorvu Center for Teaching and Learning. I've always been passionate about teaching, but that experience gave me a language for talking about pedagogy and was crucial in preparing me for the work I do now as a Film Studies professor at the University of North Carolina, Wilmington.”*

### FOR TEACHING AND LEARNING ↗

The Poorvu Center supports teaching and learning excellence across the campus, integrating support for faculty, graduate students and postdocs, and undergraduates. Several Poorvu Center units are focused exclusively on professional development and skill-based training for graduate and professional school students. The Graduate Teaching unit of the Poorvu Center offers a full range of training, consultation, and teacher development services to help graduate students develop as teachers.



#### Anton M. Bennett, PhD

Dory's McConnell Duberg Professor of Pharmacology and Professor of Comparative Medicine

PhD in Experimental Pathology, New York Medical College

Hometown: London, England

*“I enjoy the satisfaction of developing the careers of emerging scientists so they can achieve their goals and life aspirations. My aim in teaching is to provide an environment that creates curiosity, enthusiasm and is conducive to exciting learning.”*

## Professional Development

In graduate school, students develop an area of intellectual expertise; they also need to develop skills and competencies to prepare for their professional and personal lives. Yale offers an abundance of opportunities for graduate students' professional development, from learning how to write and communicate more effectively to developing leadership and life skills, exploring career options, and preparing to enter a job market in a chosen profession.

Yale's Graduate School is committed to building and maintaining a supportive and inclusive community where students from diverse backgrounds and varying experiences are supported at all levels. Yale provides much more than an educational experience; it paves the way for students to realize their unique intellectual, personal, and professional goals. In addition to the advising and academic support from individual departments and programs, numerous resource offices across the campus deploy dedicated staff to guide, educate, and mentor students as they navigate the graduate school experience and plan for their future careers.



**Aron Ramirez**  
PhD Candidate, History

Hometown:  
Downey, California

*"Yale's graduate programs have a unique culture where students frequently form or join working groups. These are important academic spaces that help me get past my fear of sharing my writing, but they're also great places to make friends."*

## WRITING AND COMMUNICATIONS SKILLS

Whether they are a first-year graduate student writing a seminar paper, an advanced doctoral candidate in the final stages of their dissertation, or at any stage in between, graduate students need to communicate effectively. Yale has the resources to help all students improve their written and oral communication skills.

### GRADUATE WRITING LABORATORY ↗

The Graduate Writing Laboratory (GWL), a unit of the Poorvu Center, offers resources to currently enrolled Graduate School students to grow as successful academic writers.

## CAREER DEVELOPMENT

Many Yale graduate students go on to careers in academia and education all over the world; at least an equal number pursue careers beyond the academy in the US and abroad. No matter which career path they choose, Yale offers resources, guidance, and opportunities to help graduate students identify their interests, hone their skills, and prepare them for whatever lies ahead.

### Office of Career Strategy ↗

The Office of Career Strategy (OCS) works with graduate students, postdoctoral scholars and alumni, both individually and in groups, to clarify career aspirations, identify opportunities beyond the academy, and provide support for every stage of career development.

## LIFE SKILLS AND PERSONAL DEVELOPMENT

Graduate school is a time to grow academically and personally. Through the [Office for Graduate Student Development and Diversity \(OGSDD\)](#) and [McDougal Graduate Student Center](#), we offer many programs and workshops to help students learn new skills and build community. Read more about these offices in the "Belonging at Yale" section.





## Funding for Graduate Students ↗

[Our funding package for PhD students](#) is one of the most generous in the world. Every PhD student receives a funding package that covers the full cost of tuition and provides a stipend to cover basic living costs like rent, food, and books for a minimum of five years. Many students are eligible for funding in their sixth year, too; additional financial support is available to cover research-related and conference travel. The Graduate School also pays for students' health coverage and provides a subsidy to assist graduate students with children.

Although, in general, Master's-degree students do not receive funding from the Graduate School, some Master's-degree programs provide tuition fellowships or stipends to select students. Enrolled students registered at least half-time receive Basic Coverage through Yale Health. Master's-degree students are encouraged to apply for [external fellowships](#), [loans](#), or [on-campus employment](#) to help offset the cost of graduate school.

## OTHER FUNDING OPPORTUNITIES

Below are just a few of the many opportunities to secure graduate student funding for research, training, and professional development.

### [GSA Conference Travel Fellowship](#) ↗

Presenting at conferences is an integral part of the graduate experience; the Conference Travel Fellowship can help offset costs and provide funding for travel expenses to these events.

### [Dean's Fund for Student-Organized Symposia](#) ↗

The Dean's Fund provides grants of up to \$1,000 for student-organized symposia at Yale.

### [Dean's Fund for Research Workshops, Seminars, and Colloquia](#) ↗

The Dean's Fund awards up to \$500 per term for a series of research seminars, workshops, or colloquia that meets at least four times per term.

### [Dean's Emergency Fund](#) ↗

GSAS students who face a one-time, unexpected financial hardship may request up to \$2,000 from the Dean's Emergency Fund.

### [Student Grants and Fellowships](#) ↗

Winning an external award, whether sponsored by a public or private agency, is a significant honor and a helpful addition to your c.v. or resumé; external fellowships may also offer added flexibility in terms of the research project or the timing of the University Dissertation Fellowship. All students are encouraged to consult the [Student Grants Database](#) to apply for external fellowships; the database has guidance for writing applications and links to other grant resources.

# Belonging at Yale



Yale's vibrant community embraces a broad diversity of ideas and identities. We are connected by a common mission: to pursue excellence and improve the world, through scholarship, education, research, preservation, and practice. These aims are inseparable from a commitment to creating a community in which each individual can feel valued, engaged, and connected.

**Belonging at Yale** supports our community's ongoing and long-term efforts to increase diversity, ensure equity, and enhance a sense of inclusion and belonging for everyone. To thrive, we must all communicate and collaborate in good faith, engage in critical reflection, hold ourselves and others accountable for our actions, and address any conflict that may arise. As it looks to the future, **Belonging at**

**Yale** draws on the work of generations of students, faculty, alumni, and staff who have strived and sacrificed to dismantle systemic deficiencies and let in greater light and truth.

The Yale community rejects any form of harassment, intimidation, discrimination, or abuse. We recognize that sharing in the benefits of being part of this community also means sharing a responsibility to create a culture in which each one of us feels welcomed and free to take risks, to seek our own potential, and to fully participate in the life of this remarkable institution. Together, we build belonging.



## Student Governance

As a graduate student, your voice and opinion are important. The Graduate School works directly with two long-standing student government organizations to learn about the ever-evolving needs in the student community and to collaborate on enhancements that benefit our students.

### GRADUATE STUDENT ASSEMBLY (GSA) ↗

Students in the Graduate School are represented collectively by the Graduate Student Assembly (GSA), which provides a forum for students to address issues across the Graduate School and University. The GSA consults with the Dean and other administrators on proposed changes in Graduate School policy, raises concerns expressed by the student body, nominates the student members of all Graduate School standing committees, and administers a graduate student conference travel fund. Representatives are elected by students in individual departments and degree programs. Each program has at least one student representative, with additional representatives allotted proportionally by size of the student population.

### GRADUATE & PROFESSIONAL STUDENT SENATE (GPSS) ↗

Student-elected representatives from each of the thirteen graduate and professional schools at Yale comprise the Graduate and Professional Student Senate (GPSS). Any student enrolled in these schools is eligible to run for a senate seat. The GPSS advocates on behalf of students within Yale, represents all graduate and professional students to the outside world, and facilitates interaction among the schools through social gatherings, academic or professional events, and community service. GPSS meetings are open to the entire graduate and professional school community. GPSS also oversees management of the Gryphon, a graduate and professional student center, located at 204 York Street, which provides office and event space for student organization activities, funds student groups, and houses [Gryphon's Pub](#).



*"I knew I wanted more collaboration and less competition in my program—a place where colleagues could be friends—and that was Yale."*

#### Michelle Johnson

PhD Candidate, African American Studies and History

Hometown: Waukegan, Illinois

## GRADUATE STUDENT COMMUNITY

1

GRADUATE SCHOOL

49.1%

WOMEN

3,007

DOCTORAL STUDENTS

12.4%

UNDERREPRESENTED STUDENTS

404

MASTER'S STUDENTS

42.3%

INTERNATIONAL STUDENTS

91

COUNTRIES REPRESENTED

50

STATES REPRESENTED

70+

GRADUATE STUDENT ORGANIZATIONS

4

CULTURAL HOUSES



## Diversity and Community

### OFFICE FOR GRADUATE STUDENT DEVELOPMENT AND DIVERSITY

Established in 2000, the Office for Graduate Student Development and Diversity (OGSDD) works collaboratively with departments and programs to recruit and support the needs of all students as they pursue graduate study at Yale. OGSDD also collaborates with the McDougal Graduate Student Center, the Office of Career Strategy, and the Poorvu Center for Teaching and Learning to provide myriad resources for students. The OGSDD is committed to building a nurturing and inclusive community where graduate students are supported in their professional, social, and intellectual goals and pursuits.

### OGSDD PROGRAMMING

OGSDD offers a wide range of programming supporting students at all points of matriculation. From summer undergraduate and post-baccalaureate research experiences for prospective students to workshops focused on academic, professional and community development for current students, students will find many opportunities for meaningful engagement.

## Underrepresented Student Admissions Data

### FROM 2017 TO 2021:

58% increase in applications

44% increase in offers

49% increase in acceptances



**Yantao Luo**

PhD Candidate, Earth and Planetary Science

Hometown: Hangzhou, Zhejiang Province, China

*“Yale gives me the opportunity to not only further my own academic research but also share my knowledge with a broader audience and inspire people beyond the Earth Science community.”*



## THE EDWARD ALEXANDER BOUCHET GRADUATE HONOR SOCIETY AND ANNUAL CONFERENCE ↗

### Edward Alexander Bouchet

Edward Bouchet (1852–1918) graduated from Yale College in 1874. He went on to become the first self-identified African American to earn a doctorate from an American university, earning a PhD in physics at Yale University in 1876. Bouchet was the sixth person in the western hemisphere to earn a doctorate in physics. He was also one of the first African Americans to be elected to the prestigious Phi Beta Kappa Honor Society.

Named for Bouchet, the Edward Alexander Bouchet Graduate Honor Society (Bouchet Society) recognizes outstanding scholarly achievement and promotes diversity and excellence in doctoral education and the professoriate. The Bouchet Society seeks to develop a network of preeminent scholars who exemplify academic and personal excellence, foster environments of support, and serve as examples of scholarship, leadership, character, service, and advocacy for students traditionally underrepresented in the academy.

The “Annual Yale Bouchet Conference on Diversity and Graduate Education” originated in our collaboration with Howard University. It has become an increasingly recognized academic conference, drawing New Haven community residents, scholars, administrators, and graduate and undergraduate students from across the nation.



In 1876, Edward Alexander Bouchet (Yale College Class of 1874) received his PhD in Physics from Yale, making him the first self-identified African American to earn a PhD in the United States.



**Malena Rice**  
PhD Candidate, Astronomy

Hometown:  
Simi Valley, California

*“Yale has a unique, vibrant community where I knew that I would be continually inspired and challenged as a student. . . I am surrounded by passionate, brilliant people who enjoy learning just as much as I do.”*

## TRANSITIONS PROGRAM ↗

Sponsored by OGSD, Transitions is an optional year-long program for first-year graduate students providing them with the skills, connections, and community that will help them flourish at Yale.

Transitions provides workshops throughout the year on topics such as Mentoring/Advising, Academic and Professional Development, Social Justice Awareness, and Mental Health and Wellness.

## OGSD FELLOWS ↗

The Office for Graduate Student Development and Diversity Fellows Program provides graduate students the opportunity to work in partnership with the OGSD administration to fulfill its mission. OGSD Fellows are doctoral students themselves (typically in their second to fifth years) who develop programming and serve as peer advisers, mentors, and advocates. OGSD Fellows help graduate students access resources and programs focusing on their specific needs and assist undergraduate students interested in graduate school.



## McDougal Graduate Student Center [↗](#)

While at Yale, students will meet friends, colleagues, and mentors through their academic program. There are many additional ways to build relationships that will help students thrive in graduate school.

Visit the McDougal Graduate Student Center to get involved in McDougal Graduate Student Life (GSL), meet the staff and student fellows, and participate in the wide range of events.

McDougal resources are specifically for students at the Graduate School of Arts and Sciences (GSAS).



*“Yale is a place where you can start a conversation with anyone and be amazed at their congeniality, accomplishments, and ambition.”*

### **Bilige Yang**

PhD Candidate, Mechanical Engineering & Materials Science

Hometown: Hohhot, Inner Mongolia, China

In 1996, the [McDougal Graduate Student Center](#) was established, thanks to the generosity and vision of Alfred McDougal '53 and his wife Nancy Lauter.

Through this new Center, the Graduate School enhanced its student services in the areas of Graduate Teaching, Graduate Career Services, and Graduate Student Life. A Graduate Writing Lab and Office for Graduate Student Development and Diversity were added in later years to further serve student needs.

## Graduate Student Organizations

Currently, students lead and manage some 70 graduate student organizations, and new groups are added each year.

### **GRADUATE STUDENT LIFE [↗](#)**

Yale aspires to be the most student-focused research university in the world. Yale's commitment to teaching and student engagement is distinctive, as are activities preparing and assisting students to take full advantage of the extraordinary strengths and assets of the university, in addition to their educational programs.

### **Schwarzman Center [↗](#)**

The Schwarzman Center is a world-class, state-of-the-art, university-wide center that serves as a campus educational, social, and cultural hub and enables virtual engagement with global audiences. The Center is dedicated to cultural programming and student life – with versatile performance, exhibition, meeting, dining, and gathering spaces – and is designed to draw together students and faculty from all of Yale's schools and colleges. It represents a cornerstone of Yale's vision to build a more unified, accessible, and innovative university.



*Public service  
is an integral part  
of a Yale education.*



*"I enjoy volunteering in local science outreach programs and mentoring the next generation of scientists."*

**Nia Harmon**  
PhD Candidate, Chemistry  
Hometown:  
Tallahassee, Florida



**PUBLIC SERVICE**

Every year thousands of our students spend time serving the local and global communities. This tradition of giving back continues to inspire them to be leaders in their communities long after graduation.

**President's Public Service Fellowship** ↗

The President's Public Service Fellowship connects our students with a range of service opportunities in the New Haven community.

**Dwight Hall** ↗

Founded in 1858, Dwight Hall serves as the home of over 60 community service groups.

**Yale Day of Service** ↗

Each spring, our alumni and friends around the world band together for community-improvement projects.

**Yale Alumni Service Corps (YASC)** ↗

promotes mutual cross-cultural awareness and sustainable development in underserved communities.

**Chaplain's Office** ↗ aids New Haven non-profits through its "Do a 180" and "Spring Break" programs.

**Green Campus Programs** ↗ strive to improve Yale's infrastructure and build systems that make sustainability second nature.

**Sustainable Food Program** ↗

Join in the effort to promote a climate of sustainability through our "green campus" initiatives and our Sustainable Food Program.

Whether interacting with patients or bringing music to a bedside, you can help promote healing at **Yale-New Haven Hospital** ↗.



# Living at Yale



*New Haven residents  
lovingly refer to their home  
as the Greatest Small City  
in America, #GSCIA.*

Founded in 1638, New Haven is a vibrant New England city offering an array of dining, shopping, and entertainment options to its more than 125,000 residents. The [dining scene](#) features cuisines from around the world. Yale's campus offers world-class [museums and galleries](#) that complement local treasures such as [Artspace](#), the [Knights of Columbus Museum](#), and the [New Haven Museum](#). You might catch the next Meryl Streep or Paul Giamatti at the [Yale Repertory Theatre](#) and [Yale Cabaret](#), or you can enjoy a show at the [Shubert](#) or [Long Wharf Theatres](#). You can hear Beethoven and Brahms at a [Yale School of Music performance](#) or a rock or pop show at [College Street Music Hall](#). The "Elm City"



offers you the chance to visit [farmers' markets](#), take a trip to the beaches on the [Long Island Sound](#), or hike up [East Rock Park](#) or [nearby Sleeping Giant](#). This is just a taste of what New Haven has to offer, and the possibilities grow exponentially as you begin to explore more of [Connecticut](#). You can choose to live in an urban downtown apartment, a Victorian brownstone on a tree-lined street, along the shoreline, or deep within the Connecticut River Valley. New Haven's greatest asset is its diversity, with something to offer for everyone. Popular graduate student neighborhoods include East Rock, Wooster Square, Westville, and Downtown.





## Graduate Student Housing ↗

Yale graduate students have many options for affordable, comfortable, and convenient places to live in greater New Haven. Students can live on campus, in Yale-owned off-campus apartments, or in off-campus apartment buildings and homes in several neighborhoods. Although most graduate students live on or near campus in New Haven, some live in surrounding towns and commute to campus.

## Family Support ↗

Yale offers robust family support resources including [comprehensive family health coverage](#), parental relief and paid support for birth or adoption, education and employment opportunities for spouses and partners, access to a Yale student affiliate ID card, and a variety of programming and services for families offered through the McDougal Center for Graduate Student Life.



**Brahmami Patel**  
PhD Candidate, Chemistry

Hometown:  
Hanover Park, Illinois

*“Yale is extremely supportive and welcoming to all its students but more than anything, Yale has a wide range of academic and mental health resources for its community of staff and students.”*

## HEALTH CARE COVERAGE

### Yale Health ↗

Yale Health is a comprehensive, on-campus, full-service health center and health care plan for students and their families.

### Dental & Vision ↗

Students may enroll annually in Optional Graduate and Professional Student Dental and Vision Care Plans online by September 15.

### Mental Health & Wellness ↗

Good mental health and wellness are critical to success as a graduate student. We encourage students to get enough sleep, eat well, and exercise and to make time for themselves, their friends and family, and the things that give them joy and energy.

Students may encounter difficult situations that they wish to discuss with a professional. At Yale, there are many supportive resources and people to help.

[Mental Health & Counseling](#) ↗ at Yale Health can help address any psychological concerns and assist in achieving intellectual and personal goals.

[Yale Well](#) ↗ initiative provides wellness information, resources, and opportunities for all students at Yale, including student wellness grants.

[The Good Life Center](#) ↗ is the official student wellness center of Yale University and is supported by the Yale Well initiative.

[The Chaplain's Office at Yale](#) ↗ supports students from all faith traditions as well as students who don't identify with any specific tradition.

[The Graduate School deans, directors and staff](#) ↗ are also here to help with any academic, personal or financial concerns and questions.

## New Haven

With a variety of on- and off-campus housing options for graduate students and their families, there are many ways to call New Haven home. Yale sits in the heart of New Haven, a vibrant, diverse city of 130,000 people. Its downtown serves as the cultural capital of the region, attracting almost three million visitors a year to its theaters, music venues, cinemas, clubs, museums, and art galleries. New Haven combines the advantages of a cosmopolitan center, with the friendliness of a small city.



*“New Haven has many of the opportunities of a big city but with a small-town feel. The restaurants and museums are great, and I particularly like being able to walk to mostly everything.”*

### Miraj Desai

Assistant Professor of Psychiatry, Yale School of Medicine

PhD in Clinical Psychology, Fordham University

Hometown: Fairfield, Ohio

Check out the following websites for more information on the city of New Haven: [Info New Haven](#), [The Shops at Yale](#), [Daily Nutmeg](#), [International Festival of Arts & Ideas](#), [Downtown New Haven](#), [Welcome to Westville](#).

## Transportation

### YALE SHUTTLE SYSTEM ↗

The free Yale Shuttle system aims to provide a safe and reliable mode of transportation for all Yale students, staff and faculty. The service combines fixed-route, to-door, and fixed-time shuttles, including routes to local grocery stores.

### BIKING ↗

Biking offers a healthy, fun and economical way to travel around New Haven, and Yale is a gold-level bicycle-friendly university. Yale offers bike share programs to enable individuals to rent a bicycle.



# Beyond Yale

After Yale, graduate students go on to employment in every sector of the workforce. They bring the knowledge and skills they develop in graduate school to positions in all areas of education and research; to business, government, and nonprofit organizations; to arts and cultural institutions, start-ups, and more. Yale faculty and many resource offices prepare students to think deeply and respond comprehensively to the changing world around us. As producers of knowledge, Yale graduates go on to make indelible impressions on the professions they choose. Wherever they are in the world, Yale alumni are eager to connect with current graduate students and offer advice about how to transform a Yale graduate education into a fulfilling career.



### **James Shulman**

Vice President and Chief  
Operating Officer of the  
American Council of Learned  
Societies

PhD in Renaissance Studies,  
Yale University

Hometown:  
New York City, New York

*“Figure out what you really care about, and if that is a specific subject interest in your academic field, then stick with that. . . But if you want to apply your brain to other kinds of problems, you should add skills to your personal portfolio or do things that make those capacities which might be latent manifest to others.”*



*“Recognize that in academia, impostor syndrome is everywhere. Don’t shy away from pursuits and ambitions out of a misplaced conformity to prevailing scholarly fashions. Get exposure to collaborative projects, leadership/mentorship roles, and experience in communicating to different kinds of audiences. Be generous with peers and students. Reflect, early and often, on evolving intellectual interests and career preferences. Find a path that meshes with your strengths and passions.”*



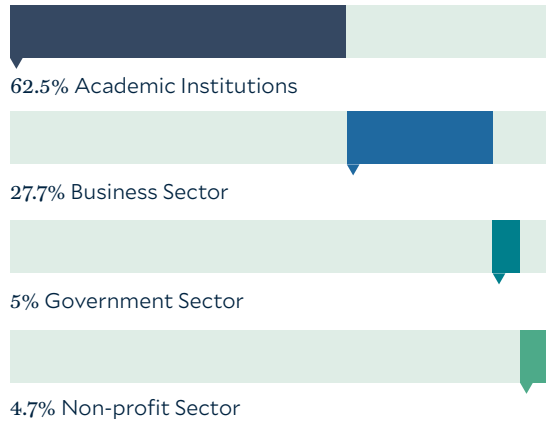
**Edward Balleisen**  
 Professor of History and Public Policy, Vice Provost for Interdisciplinary Studies  
 Duke University  
 PhD in American History, Yale University  
 Hometown: Louisville, Kentucky

**STUDENT CAREERS**

**Top Five Academic Institutions That Employ Yale Doctoral Students**

1. Yale University
2. Harvard University
3. Stanford University
4. Princeton University
5. University Of Chicago

**CAREER OUTCOMES FOR DOCTORAL ALUMNI BY SECTOR (2010-20)**



*“Take the time to explore your options and do as much networking and talking to colleagues and mentors as you can before deciding on your next steps after graduate school.”*

**Anne Toker**  
 Partner, Quinn Emanuel Urquhart & Sullivan, LLP  
 JD Harvard Law School  
 PhD in Molecular Biophysics and Biochemistry, Yale University  
 Hometown: New York City, New York



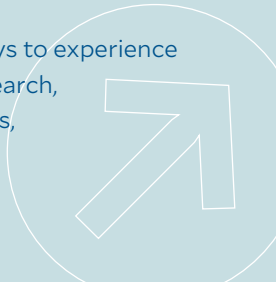


**Keerthi Shetty**  
Associate Director of  
Program Management at  
Intellia Therapeutics  
PhD in Immunobiology,  
Yale University  
Hometown:  
Boston, Massachusetts

*“My path wasn’t linear, but each job built on the skills I accomplished in the previous role. Don’t hesitate to reach out to Yale alums on networking platforms like LinkedIn and Cross Campus. . . Attend career panels as well as virtual networking events hosted by professional groups/societies.”*

## Virtual Yale ↗

There are many ways to experience the university’s research, teaching, collections, and more... online.



## Graduate School Alumni Association (GSAA) ↗

The Graduate School Alumni Association Board meets several times a year to support the strategic goals of the Graduate School and advises the Dean and staff on how to engage Graduate School alumni with Yale. Alumni of all eras, academic disciplines, professions, and geographic locations are represented on the Board.

Graduate School alumni support students in many ways, from career mentoring and networking to research and job searching advice. Connect with the GSAA by:

Participating in the [Where Do I Go From Yale?](#) ↗ event and learn how alumni have crafted their career paths, traditional or not

Attending a [Wilbur Cross Medalist](#) ↗ talk to hear from the most distinguished Graduate School alumni

Meeting the Graduate School community on [Cross Campus](#) ↗, a career networking and mentoring platform







The GSAS shield includes the year 1847, its founding date; and three crosses derived from the arms of Bishop George Berkeley, who created the first scholarship for Yale students “reading for the second degree.” The black, Y-shaped device represents the “pallium,” a garment worn by philosophers in ancient Rome, and frequently used as a symbol for Yale.